

PWA TECHNOLOGIES

OVER 55 YEARS OF COMBINED EXCELLENCE

AN
INDUSTRY
LEADER IN
VENTILATION &
FEED STORAGE
SOLUTIONS



BINS • INLETS • FANS • AND MORE...
Take a look inside for more details.

www.pwaire.com | www.Prairie-Pride.com





ABOUT PWA TECHNOLOGIES

As a recognized leader in hands-on agricultural product manufacture and innovation, we have made a major capital investment, in manufacturing equipment design, installation and facility expansion necessary to ensure maximum production capability. This investment gives us the ability to consistently produce products that set the benchmark for quality; recognized by name, throughout today's Ag industry. Having been producers ourselves in the hog industry and poultry industry for many years, we understand the unique challenges that these producers face and we've made it our mission and goal to provide high quality products that fit their needs and their values. Our wide range of polyethylene bulk feed bins, bulk feed tanks, storage bins, ventilation fans, hog feeders and bin accessories have been field tested and are widely approved by our customers throughout North America. Our products are well known for their reliability, longevity, and efficiency in set up and long term maintenance. PWA has been an innovator in the products it has produced and introduced to its customers over the years and thoroughly committed to doing so for future generations and beyond.



Standing the test of time.

OUR COMMITMENT TO QUALITY

At PWA, we are committed to the quality of our products and the processes we set in place to ensure an excellent product. We believe in continuous improvement and have implemented many quality management programs such as Lean Manufacturing to make sure we are operating at optimal levels.

We test our products to industry standards such as BESS (Bioenvironmental and Structural Systems Lab) Testing.

GARANTEE

We provide a guarantee on our products to be free of any manufacturers' defects with a 5 Year Guarantee on most products and a 7 Year Guarantee on Polybins. We truly stand behind the products we produce - that is why this guarantee is amongst the longest in this industry.

BESS LAB CERTIFICATION

Bioenvironmental and Structural Systems Laboratory

University of Illinois

The Bioenvironmental and Structural System (BESS) Laboratory is a research, product-testing and educational laboratory. The lab provides unbiased engineering data to aid in the selection and design of agricultural buildings and assists equipment manufacturers in developing better products.

In addition to testing and publishing fan performance data, the BESS lab also performs the following:

- Evaluation of Attic Ventilation Systems.
- Poultry Light Trap Performance Testing.
- Accelerated Corrosion Testing of Steel in Animal Buildings.

Products that have been Bess Lab Certified are highlighted with Yellow and Yellow Only!



TABLE OF CONTENTS

Exhaust Fans 4

Pump Out Chimney 5

Side Wall Pit Transitions..... 5

Power Chimney 6

Stir Fans 7

Replacement Shutters/Blades 8

Replacement Motors 9

Ziehl Motors/Fans..... 9

Air Inlets 11

Sidewall Inlets/Hoods..... 12

Poly Ridge Vent 13

Curtain Pockets 13

9'6" Polybins..... 16

9'6" Heavy Duty Polybins..... 17

8' Polybins 18

7' Polybins 19

4' & 5' Polybins 20

Portabin 21

Polybin Accessories 22

Specialty Applications..... 23

Poly Pit Plug 24

Sorting Panels 25

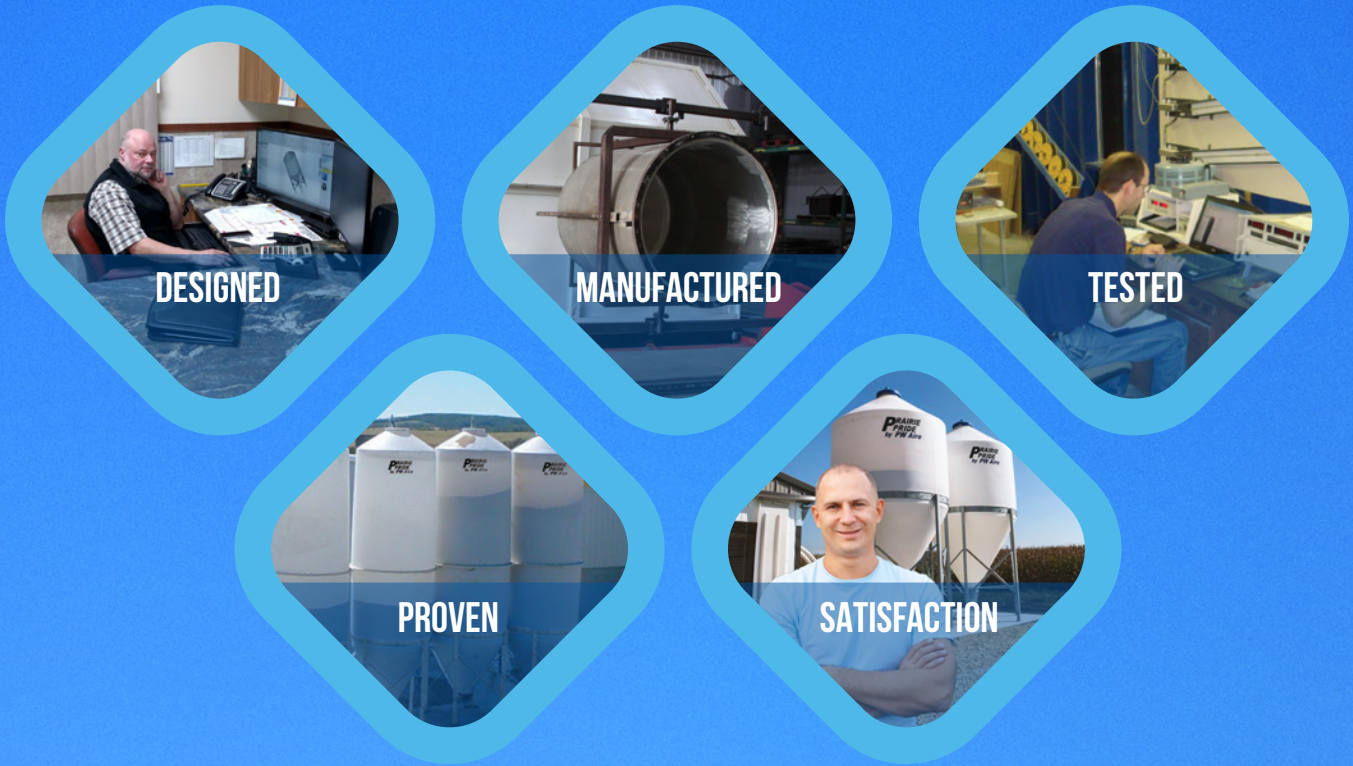
Flo-Rite 25

Out-N-About Trailer 26

Mineral Tubs 26

Home & Garden 27

THE PWA DIFFERENCE



PWA Technologies has attempted to show each and every product in this catalog in an accurate manner, yet, because our product line is continually evolving and/or production enhancements may sometimes change the appearance of an item before new photos can be taken. The manufacturer, therefore retains the right to change any item or specification shown herein. PWA is not responsible for typographical errors.



EXHAUST FANS



FLEX SERIES EXHAUST FANS

The hi-velocity **PWA Flex Series Exhaust Fans** come in seven different sizes: 12" 16" 18" 24", 36", 48" and 54". All are direct drive, powered by **Vostermans Mf-Flex Motor** and prop mounted on a stainless steel motor mount. Our **PWA Flex Series Exhaust Fans** ship complete with shutter guard and discharge cone for ease of installation and are easy to clean and maintain. All **PWA Flex Series Exhaust Fans** are **BESS Labs Certified**, and qualify for most energy incentives programs being offered by more and more states. Not only are our new **PWA Flex Series Exhaust Fans** the new muscle on the block, but are also backed by our strong commitment to continue to offer the best in both productivity and customer satisfaction.

MODEL#	FAN SIZE	VOLTS	CFM/WATT	CFM @ .05 SP	R/O
EF1200FS	12"	115/230	8.09	1,530	17.25" x 17.25"
EF1600FS	16"	115/230	11.6	3,090	21.5" x 21.5"
EF1800FS	18"	115/230	8.05	3,850	23.25" x 23.25"
EF2400FS	24"	115/230	8.09	6,880	29.5" x 29.5"
EF3600FS	36"	115/230	15.4	10,460	41.5" x 41.5"
EF4800FS	48"	230	19.7	23,878	53" x 53"
EF5400FS	54"	230	20.7	30,000	61" x 61"



Mach 1 TITAN Series FAN SERIES

Our air exhaust fans are available from 12 inch up to a 54 inch model. Powerful state-of-the art fans help dilute indoor dust concentrations and quickly eliminate odor. These power packed exhaust fans fit snugly into side openings. They operate quietly, efficiently and with maximum effectiveness.

OUR TITAN FAN SERIES QUALIFY FOR HIGH EFFICIENCY VENTILATION INCENTIVES OFFERED BY MOST STATES.



MODEL#	FAN SIZE	VOLTS	CFM/WATT	CFM @ .05 SP	R/O
EF1200MT-T	12"	115/230	9.5	2,344	17.25" X 17.25"
EF1600MT-T	16"	115/230	14.0	3,736	21.5" X 21.5"
EF1800MT-T	18"	115/230	13.8	4,496	23.25" X 23.25"
EF2400MT-T	24"	115/230	15.1	7,677	29.5" X 29.5"
EF3600MT-T	36"	115/230	19.8	10,325	41.5" X 41.5"

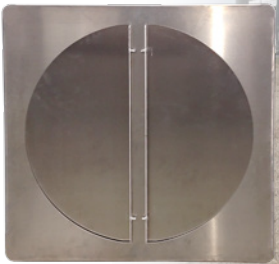
PUMP OUT CHIMNEY

PWA VENTILATION SOLUTIONS

Tired of having rust and corrosion caused by poor ventilation ruin your sidewalls? The latest in European technology can help eliminate the problem by getting air where it belongs... ABOVE THE ROOF LINE.

PC2400PIT 11.5' TOTAL HEIGHT

- Optional eave mount bracket available
- Prevents direct hits from wind
- Available in 25"
- Neighbor friendly
- No circulating "Pit Gas"



Optional Damper: PCS 2400



SIDEWALL PIT TRANSITIONS

PTSW2400

- No restriction of airflow to the fan.
- One piece construction.



MODEL#	PIT R/O	SHIPPING WEIGHT
PT2400	35" x 39" L&W	45 lbs.
PT3200	35" x 39" L&W	45 lbs.
PTSW2400	24" x 50" H&W	70 lbs.

- Transitions will accommodate fans ranging from 12" to 24"
- Smooth molded contours with no sharp corners for improved airflow.



Stainless Steel Slides
Easy access for pumping



Stackable for easy shipping

POWER CHIMNEY



fans and drives

ZIEHL-ABEGG

Multifan

36" POWER CHIMNEY

MODEL#	SIZE	VOLTS	CFM	R/O	Square Opening
PC3600MF	36"	230	10,500	38" x 38"	-
PC3600Z	36"	230	15,000	38" x 38"	-
PCS3600MF	36"	230	10,500	-	45" x 42"
PCS3600Z	36"	230	15,000	-	45" x 42"

CHIMNEY EXTENSION

CE3600	36"	Chimney Extension, 48" Tall with coupler			
--------	-----	------------------------------------------	--	--	--

ROOF SEALER

RSR3600	36"	Ridge, molded poly			
RSA3600	36"	Rubber			

RAIN CONE

RC3600	36"	Rain Cone			
RCD3600	36"	Rain Cone with Dome			

BUTTERFLY

BD3600	36"	Top Butterfly			
--------	-----	---------------	--	--	--

Available with Multi Fan or Ziehl Motors



fans and drives

ZIEHL-ABEGG

Multifan

25" POWER CHIMNEY

MODEL#	SIZE	VOLTS	CFM	R/O	SQUARE OPENING
PC2400MF	25"	230	6,493	26.5" x 26.5"	-
PC2400Z	25"	230	7,200	26.5" x 26.5"	-
PCS2400*	25"	230	-	-	29.5" x 29.5"

CHIMNEY EXTENSION

CE240036	25"	Chimney Extension, 36" Tall with coupler			
CE240066	25"	Chimney Extension, 66" Tall with coupler			
CE240096	25"	Chimney Extension, 96" Tall with coupler			
CE240036	25"	Chimney Extension, 132" Tall with coupler			

ROOF SEALER

RSR2400	25"	Roof Sealer - Ridge, molded poly			
RSA2400	25"	Roof Sealer - Rubber			

RAIN CONE

RC2400	25"	Rain Cone			
RCD2400	25"	Rain Cone with Dome			

BUTTERFLY

BD2400	25"	Top Butterfly			
--------	-----	---------------	--	--	--

STIR FANS



CFHT

Optional mount tabs, front and back

PWA 24 and 36 inch recirculating fans. The motors and blade configurations feature the latest innovation in European technology for maximum efficiency. During on/off cycles quietly efficient PWA axial flow fans generate minimum of noise; helping to maintain a serene atmosphere. They help control ventilation, temperature and humidity. Suspended from a steel powder coated ceiling bracket PWA axial flow fans swivel into position for ease of operation.

- DESIGNED FOR QUIET OPERATION
- PRESSURE WASHER FRIENDLY, EASY TO CLEAN



RECIRCULATING FAN - 24"

MODEL#	SIZE	VOLTS	CFM	SPACING
CF2400MT	24" Circulator Fan w/US Motor	115/230	4,800	25'
CF2400MF	24" Circulator Fan w/Multifan Motor	230	4,740	25'
CF2400MTS	Economy 24" Circulator	115/230	4,750	25'



RECIRCULATING FAN - 36"

MODEL#	SIZE	VOLTS	CFM	SPACING
CF3600MT	36" Circulator Fan w/US Motor	115/230	10,500	40'
CF3600MF	36" Circulator Fan w/Multifan Motor	230	11,169	40'
CF3600MTS	Economy 36" Circulator	115/230	10,000	40'



NEW STEALTH DESIGN TECHNOLOGY FOR INCREASED VELOCITY



Fan Mount allows for multiple mounting and hanging options.

MODEL#	FAN SIZE	VOLTS	CFM
CF2000FS	20"	115/230	5,500
CF2400FS	24"	115/230	6,490

REPLACEMENT SHUTTERS



ITEM#	ITEM DESCRIPTION	SIZE / RO	SHIPPING WEIGHT
EFS12	12" FAN SHUTTER	16" x 16"	2.9 lbs.
EFS16	16" FAN SHUTTER	20.125" x 20.125"	4.7 lbs.
EFS18	18" FAN SHUTTER	22" x 22"	4 lbs.
EFS24	24" FAN SHUTTER	27.875" x 27.875"	7.4 lbs.
EFS36	36" FAN SHUTTER	39.813" x 39.813"	12.8 lbs.
EFS48	48" FAN SHUTTER	51.375" x 51.375"	18.6 lbs.
EFS54	54" FAN SHUTTER	60" x 60"	20 lbs.

HEAVY DUTY PVC | LOW MAINTENANCE | STAINLESS STEEL WIRE

WINTER COVERS



ITEM#	ITEM DESCRIPTION	SIZE / RO	SHIPPING WEIGHT
WC1200	12" WINTER COVER	16" x 16"	3 lbs.
WC1600	16" WINTER COVER	20.125" x 20.125"	5 lbs.
WC1800	18" WINTER COVER	22" x 22"	6 lbs.
WC2400	24" WINTER COVER	27.875" x 27.875"	8 lbs.
WC3600	36" WINTER COVER	39.813" x 39.813"	13 lbs.
WC4800	48" WINTER COVER	51.375" x 51.375"	20 lbs.
WC5400	54" WINTER COVER	60" x 60"	22 lbs.

REPLACEMENT BLADES



G = Galvanized | S = Stainless Steel

High performance fiberglass reinforced blades with cast Aluminum hubs where applicable

FLEX REPLACEMENT BLADES

ITEM/PART #	ITEM DESCRIPTION	# OF BLADES	SHIPPING WEIGHT
FB18MF	Multi 12", 16", 18" *Specify 12", 16" or 18" when ordering FM18MF	6	6 lbs.
FB24SMF	Multi 24"	3	8 lbs.
FB24MF	Multi 24"	5	8 lbs.
FB36MF	Multi 36"	3	15 lbs.

REPLACEMENT BLADES

ITEM/PART #	ITEM DESCRIPTION	# OF BLADES	SHIPPING WEIGHT
FB12CR	PWA 12"	6	6 lbs.
FB16CR	PWA 16"	6	6 lbs.
FB18CR	PWA 18"	6	6 lbs.
FB24CR	PWA 24"	3	6 lbs.
FB3600G	PWA 36" Galvanized	3	6 lbs.
FB3600SS	PWA 36" Stainless	3	6 lbs.
FB4800G	PWA 48" Galvanized	3	13 lbs.
FB4800SS	PWA 48" Stainless	3	13 lbs.
FB5400G	PWA 54" Galvanized	3	20 lbs.
FB5400SS	PWA 54" Stainless	3	20 lbs.

REPLACEMENT MOTORS



SMOOTH...QUIET...
EFFICIENT...FAN MOTORS

FLEX SERIES REPLACEMENT MOTORS

US MOTORS STANDARD IN ALL PWA FANS

- Double sealed ball bearings • Totally enclosed air over • Cushion base
- Auto overload • *Single speed

METRIC SHAFT MOTORS

MODEL#	HP	REPLACES	VOLTS	RPM
240V				
FM18FS	1/3	8" to 24" FANS	220v	1,600
FM24FS	1/2	22" to 24" FANS	220v	1,000
FM36FS	1/2	36" FANS	220v	800
FM48 & 54FS	1	48" to 54" FANS	220v	1,725

REPLACEMENT MOTORS

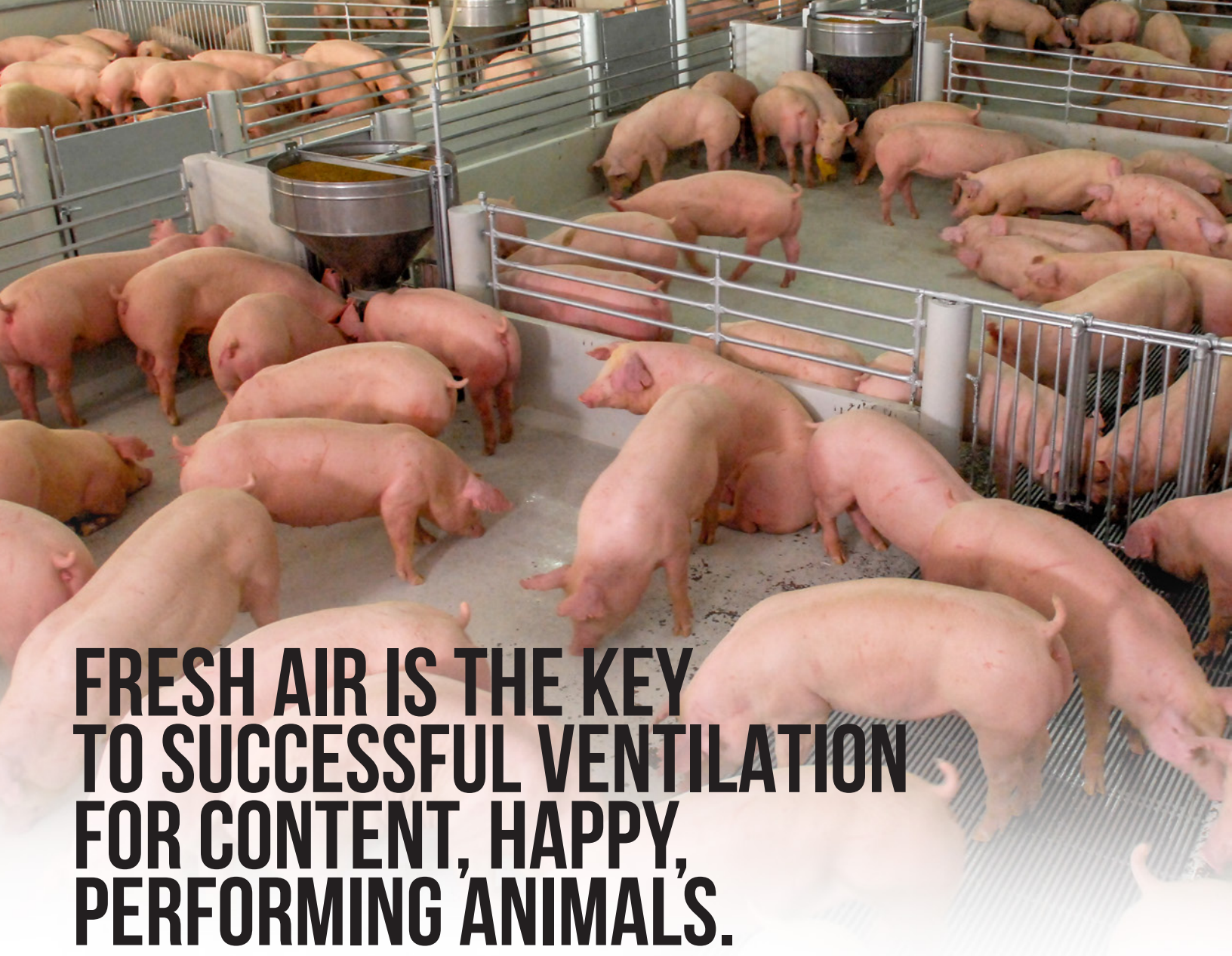
MODEL#	HP	VOLTS	PWA FAN	FRAME	RPM
PWA43	1/3	115 / 230	12, 16, 18" DD	48Z	1,800
PWA47	1/2	115 / 230	24" DD	48Z	1,200
PWA39	1/2	115 / 230	36" DD	48Z	900
PWA782	1	230 / 115	48"- 50" BD	56	1,800*
PWA594	1.5	230	54" BD	56H	1,800*

ZIEHL MOTORS/FANS



REPLACEMENT MOTORS

MODEL#	HP	VOLTS	PWA FAN	RPM
FM2400Z	0.5	110/230	PC2400Z	1,100
FM3600Z	0.625	110/230	PC3600Z	850

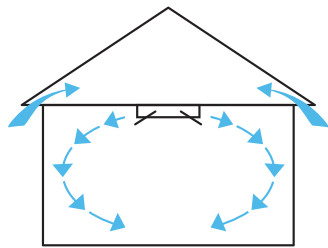


FRESH AIR IS THE KEY TO SUCCESSFUL VENTILATION FOR CONTENT, HAPPY, PERFORMING ANIMALS.

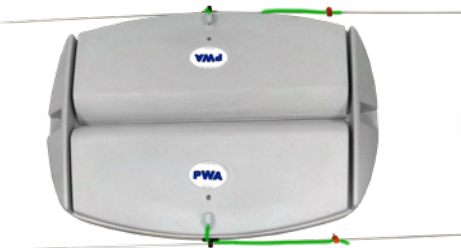


MAXIMIZE YOUR PROFITABILITY... THROUGH PROPER VENTILATION.

- Stress free environment
- Reduced condensation
- Removal of gases and odor
- Dispersal of stock throughout building avoids herding and limits waste build-up



Negative Pressure (Vacuum) creates the jet of air at the leading edge of inlets.



AI2400D - Double Pull



AI2400D/S - Single Pull

FOAMED POLYETHYLENE TO REDUCE CONDENSATION



AIR INLETS

FEATURES & ADVANTAGES

- Curved inner doors help keep winter/spring/fall airflows along the ceiling
- EZ clean low maintenance
- Extremely durable foamed polyethylene (Added R-value that fights condensation)
- Corrosion free

PRESSURE WASHABLE

- EZ FIT and install
- Maximize air flow
- Low profile
- Color: Silver-gray (Blends well with all ceilings)

SINGLE LID AIR INLET

MODEL#	AIRFLOW/CFM	R/O	FUNCTION	DIRECTIONAL
AI1200S	800 - 1,200	16.25" x 22.25"	Actuated	Single
AI1200S-C*	800 - 1,200	16.25" x 22.25"	Actuated	Single
AI2400S	2,000 - 2,400	19.75" x 32.75"	Actuated	Single

*Designed for continuous installation on 24" OC trusses



DOUBLE LID AIR INLET

MODEL#	AIRFLOW/CFM	R/O	FUNCTION	DIRECTIONAL
AI1200D	800 - 1200	16.25" x 22.25"	Actuated	Double
AI1200D/S	800 - 1200	16.25" x 22.25"	Actuated	Double
AI2400D	2,000 - 2,400	19.75" x 32.75"	Actuated	Double
AI2400D/S	2,000 - 2,400	19.75" x 32.75"	Actuated	Double
AI3000D	3,000 - 4,000	29.5" x 29.5"	Actuated	Double
AI4000D	4,000 - 5,000	30.5" x 37"	Actuated	Double

infiniti 3000

DOUBLE LID AIR INLET

- EZ to replace old 4-way inlets
- Doors open straight down to 90° for maximum air drop

MODEL#	AIRFLOW/CFM	R/O	FUNCTION	DIRECTIONAL
AI3000D	3,000 - 4,000	29.5" x 29.5"	Actuated	Double
AI3000DF	3,000 - 4,000	29.5" x 29.5" (Flat)	Actuated	Double

Both units available in single or double pull.

TITAN 4000 MACH I

DOUBLE LID AIR INLET

- Doors open straight down to 90° for maximum air drop

MODEL#	AIRFLOW/CFM	R/O	FUNCTION	DIRECTIONAL
AI4000D	4,000 - 5,000	30.5" x 37"	Actuated	Double

AIR INLETS CONT.



WEIGHTED LID AIR INLET FEATURES & ADVANTAGES

- EZ clean low maintenance
- Extremely durable foamed polyethylene (Added R-value that fights condensation)
- Corrosion free
- EZ FIT and install
- Maximize air flow
- Low profile
- Pressure washable

MODEL#	AIRFLOW/CFM	R/O	FUNCTION	DIRECTIONAL
AI1500DW	1,000 - 1,500	21" x 18.5"	Weighted	Double
AI2600DW	2,000 - 2,600	24.5" x 29"	Weighted	Double
AI1500RD	1,000 - 1,500	12.5" x 22.5"	Weighted	Double
AI2800RD	2,200 - 2,800	16.5" x 34"	Weighted	Double

SIDEWALL INLET HOODS



Heavy duty **POLY CUSTOM HOODS** -
PRIVATE LABELING.
Versatile outside/sidewall or inside mounts.

MODEL#	OD	ID
PWSH-A	20.25" x 32.5"	19.25" x 31.75"
PWSH-B	15.25" x 35.25"	14" x 34.25"
PWSH-C	16.75" x 22.5"	15.75" x 21.25"
PWSH-D	11.5" x 22.75"	10.5" x 21.75"



SIDEWALL INLETS



IMPROVE AIR FLOW WITH OUR NEW WALL INLETS

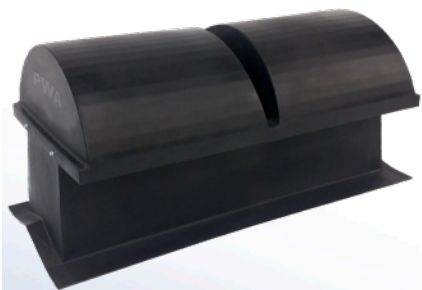


Contoured molded housing with integral hood allows for effective airflow patterns; doors are plastic-covered foam with edge seals to keep out cold winter air when closed.

MODEL#	R/O	CFM
PW1222	22" x 11"	800
PW1246	46" x 11"	1,700
PW1546	46" x 15.5"	2,300

POLY RIDGE VENT

MAXIMIZE YOUR
VENTILATION



PWA Poly Ridge Vents.
TWO PIECE CONSTRUCTION

- * Ship 10 vents in the shipping space that others can only fit 2.
- * Increases the structural strength to with stand heavy wind and snow loads.
- Allows hot venting in summer.
- Supplies fresh air in winter.
- Molded polyethylene with the highest level of UV stabilization for corrosion resistant long life.
- Installs on roofs with 2/12 to 6/12 pitches.
- Inlet faces downward with bird screened off openings.
- High rise design remains functional even with deep drifting snow.



ITEM#	ITEM DESCRIPTION	R/O	SHIPPING WEIGHT
RV48	Poly Ridge Vent	13" x 48"	30 lbs.

CURTAIN POCKETS

Ribbed design for superior strength and maintaining its shape longer.

CURTAIN POCKET FEATURES

- Made of durable polyethylene
- Easy to install
- Will not rust or corrode
- Light weight
- Smooth edges are curtain friendly unlike metal



ITEM/MODEL#	ITEM DESCRIPTION	SHIPPING WEIGHT
CP1848	18" x 48" Pocket Pair	18 lbs.
CP1866	20" x 66" Pocket Pair	24 lbs.
CP1878	20" x 78" Pocket Pair	30 lbs.
CP2488	24" x 86" Pocket Pair	36 lbs.
CP20106	20" x 106" Pocket Pair	48 lbs.

SEE THE DIFFERENCE

POLYBIN PAYBACKS | CUT FEED OUTAGES & REDUCED LABOR




**WHATEVER YOUR TONNAGE...
WHATEVER YOUR NEED...
WE'VE GOT
YOU COVERED.**

POLYBIN FEATURES:

- Visible feed level
- Won't dent
- Up to 18 ton capacity
- Corrosion resistant for long life

9'6" POLYBINS



NEW 9'6" DIAMETER POLYBIN SERIES

New improved lower metal auger boot transition ring on all 9'6" & 7' Diameter Polybins.

ALL THE GREAT FEATURES YOU HAVE COME TO EXPECT FROM POLYBIN IN A LARGER ONE PIECE BIN CONSTRUCTION.

9'6" DIAMETER					
MODEL#	CAPACITY CU. FT.	BUSHEL	TONS(2000 LBS)	M.TONS(2200 LBS)	FILL HT.
PL-610	612	490	12.24	11.13	17' 2"
PL-770	771	617	15.42	14.02	19' 5"
PL-885	884	708	17.68	16.07	21' 2"

*Tonnesages calculated at 40 lbs./cu. ft.

NEW 9'6" HEAVY DUTY POLYBINS

POLY BIN HD SERIES... CORROSION RESISTANT TO THE MAX. FOR YOUR SALT OR CONCENTRATE STORAGE NEEDS.

PWA Technologies has developed another line of the Futures Bin today. Check the list of features below and you will agree Poly Bin has everything you want in a bin:

- Visible Feed Level
- Swing Clear Lid & Opener
- Rugged polyethylene construction handles the toughest handling and use
- 7 Year Warranty
- Corrosion Resistant for an Extra Long Life
- Ultra smooth cone for improved concentrate flowability
- Heavy duty galvanized steel ring; support stand; all interior bolts, nuts, washers are stainless steel
- Large 22" fill opening

POLY BIN PAYBACKS:

- Inventory at a glance saves management time
- Smooth material flow saves time from banging on bins
- Doesn't Dent where bridging starts
- Corrosion resistant more than twice the life of steel bins



HD Series Poly Bin has a stainless steel boot ring.

9'6" DIAMETER					
MODEL#	CAPACITY CU. FT.	BUSHEL	TONS @ 65lbs / CuFt	TONS @ 75lbs / CuFt	FILL HT.
PL-610HD	612	490	19.89	22.95	17'2"
PL-770HD	771	617	25.06	28.91	19'5"
PL-885HD	884	708	28.73	33.15	21'2"

8' POLYBINS

NEW POLY BIN 8' DIAMETER SERIES - ONE PIECE

MAXIMIZE YOUR PROFITABILITY... THROUGH PROPER FEED STORAGE AND REDUCED FEED OUTAGES.

PWA Technologies has developed another line of the Futures Bin today. Check the list of features below and you will agree Poly Bin has everything you want in a bin:

- Visible Feed Level
- Swing Clear Lid & Opener
- Rugged polyethylene construction handles the toughest handling and use
- 7 Year Warranty
- Corrosion Resistant for an Extra Long Life
- Ultra smooth cone for reduced feed outages and feed separation
- Heavy duty galvanized steel ring and support stand
- Large 22" fill opening

POLY BIN PAYBACKS:

- Inventory at a glance saves management time
- Optimal animal performance reduced feed outages
- Smooth feed flow saves time from banging on bins
- Doesn't Dent where bridging starts
- Corrosion resistant last as long as your barn



New improved lower metal auger boot transition ring on all 9'6" & 7' Diameter Polybins.

8' DIAMETER

MODEL#	CAPACITY CU. FT.	BUSHEL	TONS(2000 LBS)	M.TONS(2200 LBS)	FILL HT.
PL-335	336	269	6.72	6.11	13' 10"
PL-430	432	346	8.64	7.86	15' 9"
PL-530	528	422	10.56	9.60	17' 8"
PL-635	633	506	12.66	11.51	19' 9"
PL-710	708	566	14.69	12.87	21' 2"

*Tonnages calculated at 40 lbs./cu. ft.

7' POLYBINS

MAXIMIZE YOUR PROFITABILITY... THROUGH PROPER FEED STORAGE AND REDUCED FEED OUTAGES.

PWA Technologies has developed the Futures Bin today in our POLYBINS. Our POLYBIN has features that can never be matched by steel bins. Check the list of features below and you will agree that POLYBIN is the bin for your needs.

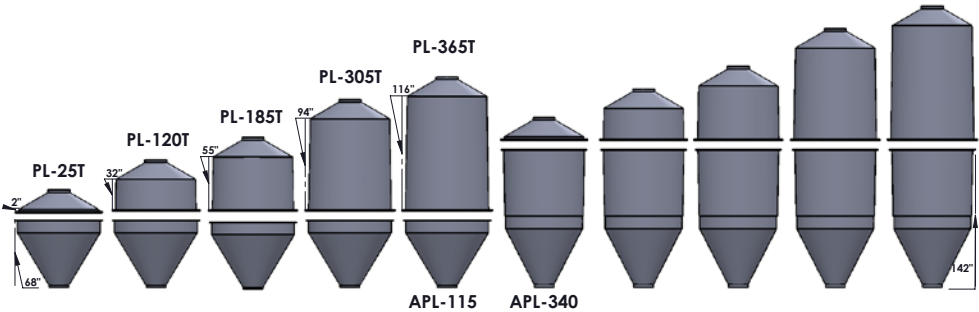
- Visible Feed Level
- 7 Year Warranty, the Longest in the Industry
- Corrosion Resistant For Long Life
- Large Poly Bins have 60 Degree Cone & Ultra Smooth interior finish for easy, even feed flow.
- Reduced feed outages with the ultra smooth cone feed flow
- Large Poly Bins have 35 Degree Roof for maximizing fill height
- Easy to Assemble
- Heavy duty steel ring and support stand
- Large 22" fill opening
- Ideal strength and flow characteristics for high moisture feeds, corn, soybean, salt, concentrates (premix), etc.



New improved lower metal auger boot transition ring on all 9'6" & 7' Diameter Polybins.

OPTIONAL ACCESSORIES:

- Remote lid opener with double spring hold down.
- Poly auger boot for multiple size straight augers 2" - 4".
- Roller slide gate
- Cyclone for proper receiving of pneumatically delivered feed.
- Sturdy steel ladders for all bin sizes.



7' DIAMETER

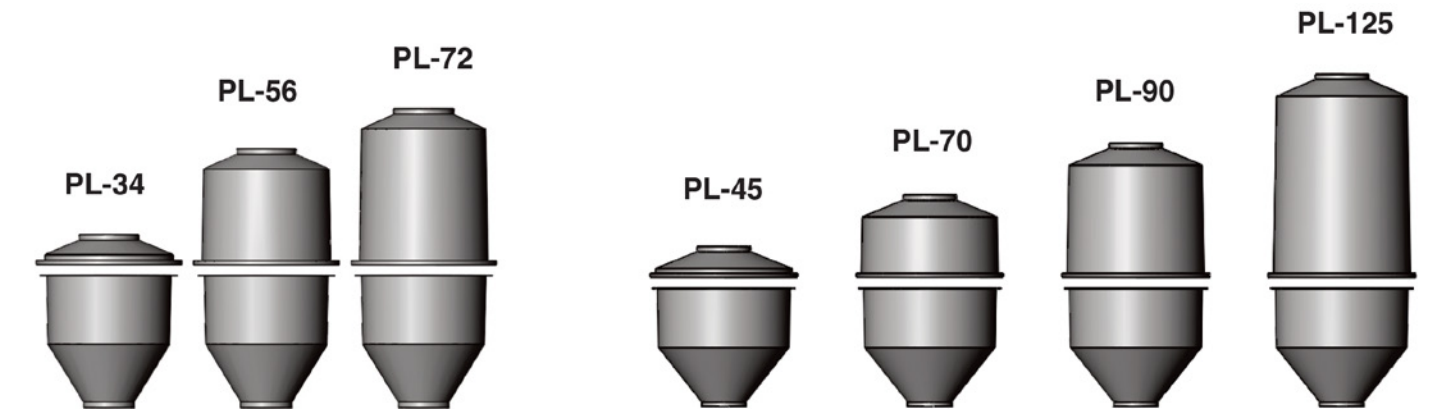
MODEL#	CAPACITY CU. FT.	BUSHEL	TONS(2000 LBS)	M.TONS(2200 LBS)	MAX WT. CAP/CU.FT.	FILL HT.
PL-140	140	112	2.8	2.54	85 lbs.	9' 6"
PL-235	234	187	4.68	4.25	85 lbs.	12' 3"
PL-300	302	241	6.04	5.48	85 lbs.	14'
PL-420	418	333	8.26	7.51	60 lbs.	17' 6"
PL-480	480	384	9.6	8.73	55 lbs.	19' 4"
PL-365	365	292	7.3	6.64	75 lbs.	15' 4"
PL-460	459	367	9.18	8.35	60 lbs.	18' 2"
PL-525	527	421	10.54	9.58	55 lbs.	19' 10"
PL-645	642	512	12.76	11.6	45 lbs.	23' 3"
PL-705	705	563	14.1	12.82	40 lbs.	25' 2"

*Tonnages calculated at 40 lbs./cu. ft.

4' & 5' POLYBINS

HAVE LIMITED SPACE IN A TIGHT LOCATION? WE HAVE THE SOLUTION!!!

Our 4 and 5 ft diameter Polybins have all the same features as our larger diameter bins and take up much less space.



4' DIAMETER

MODEL#	CAPACITY CU. FT.	BUSHELs	TONS(2000 LBS)	M.TONS(2200 LBS)	MAX WT. CAP/CU.FT.	FILL HT.
PL-34	34	27	0.68	0.62	85 lbs.	6' 9"
PL-56	56	45	1.12	1.02	85 lbs.	9' 2"
PL-72	72	58	1.44	1.3	85 lbs.	10' 7"
PL-80	83	66	1.67	1.51	85 lbs.	11'

5' DIAMETER

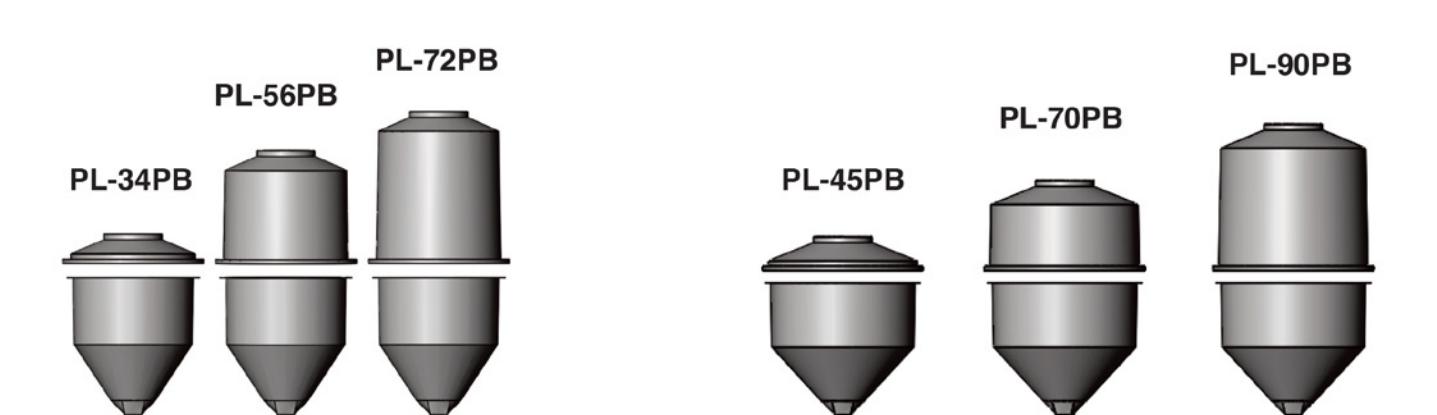
MODEL#	CAPACITY CU. FT.	BUSHELs	TONS(2000 LBS)	M.TONS(2200 LBS)	MAX WT. CAP/CU.FT.	FILL HT.
PL-45	45	36	0.9	0.82	85 lbs.	7'
PL-70	72	58	1.44	1.3	85 lbs.	9' 1"
PL-90	94	75	1.88	1.7	85 lbs.	10' 9"
PL-125	126	100	2.52	2.29	60 lbs.	12' 8"

*Tonnes calculated at 40 lbs./cu. ft.

PORTABIN

PORTABIN FEATURES:

- 4' and 5' diameter models
- Large 22" diameter fill opening.
- Visible material level.
- 55° cone with ultra smooth interior for easy even flow.
- Forklift & pallet jack usable.
- 6" x 10" Slide gate.
- Heavy duty corrosion resistant polyethylene bin.
- Galvanized steel stand.



4' DIAMETER

MODEL#	CAPACITY CU. FT.	BUSHELs	TONS(2000 LBS)	M.TONS(2200 LBS)	MAX WT. CAP/CU.FT.	FILL HT.
PL-34PB	34	27	0.68	0.62	85 lbs.	5' 10"
PL-56PB	56	45	1.12	1.02	85 lbs.	8'
PL-72PB	72	58	1.44	1.3	60 lbs.	9' 4"

5' DIAMETER

MODEL#	CAPACITY CU. FT.	BUSHELs	TONS(2000 LBS)	M.TONS(2200 LBS)	MAX WT. CAP/CU.FT.	FILL HT.
PL-45PB	45	36	0.9	0.82	85 lbs.	6'
PL-70PB	72	58	1.44	1.3	60 lbs.	7' 8"
PL-90PB	94	75	1.88	1.7	45 lbs.	9' 4"

*Tonnes calculated at 40 lbs./cu. ft.

POLYBIN ACCESSORIES



PLASTIC FEED BIN LIDS

- Opens completely to below the collar top
- Double spring load for strong hold down
- Factory assembled for easy installation
- Adapts to multiple roof pitches
- Domed plastic weather resistant lid
- Collar band clamp allows easy installation in 360° orientation

SWING CLEAR LID

ITEM/MODEL#	ITEM DESCRIPTION
PWLIDKIT	Collar Mount & Lid



ROLLER SLIDE GATE



PLSLIDE-SL

15" SCREW LID



PLHATCH

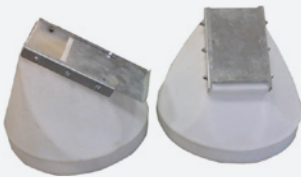
LID & OPENER KIT



PLLIDKIT

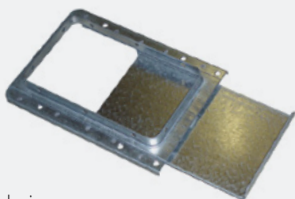
BOOT TRANSITION WITH SLIDE GATE

NEW BUCKET FILLER



PLSLIDE-BOOT

6X10 SLIDE GATE



Available in stainless steel

PLBOOT-SLIDE

CYCLONE RECEIVER



PLCYCLONE

STRAIGHT AUGER BOOT TRANSITION



PLBOOT-S

BOOT TRANSITIONS



PLBOOT-90

PLBOOT-30

STAINLESS STEEL ACCESSORIES AVAILABLE



SPECIALTY APPLICATIONS

CUSTOMERS USE OUR VARIOUS BOTTOMS AND TOPS OR COMPLETE POLYBIN MODELS AND CUSTOMIZE THEIR OWN STEEL STAND SYSTEM TO COMPLETE THEIR REQUIRED APPLICATION.

Polybins are manufactured of FDA Approved polyethylene.



OUR VERSATILE BINS FULFILL UNIQUE APPLICATIONS IN A VARIETY OF SETTINGS AND USAGE



GRIS CASE

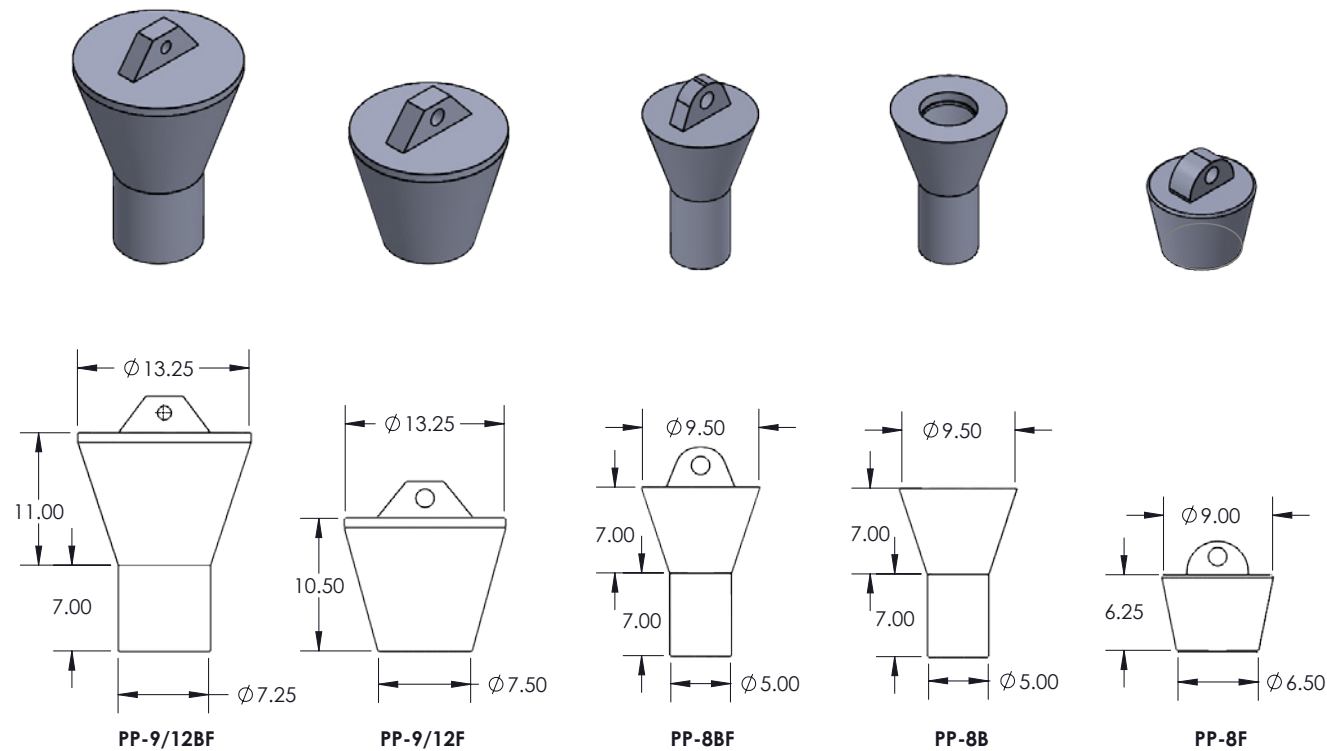


POLY PIT PLUG

flex & burpable
poly pit plug

- A range of sizes to fit 6" - 12" pipe.
- Large 2" opening for ease of filling with sand to 3/4 full.
- Flex plugs seal liquid in to reduce manure flow problems.
- Burpable feature is the extended bottom which allows the plug to rise due to gas pressure then realign when dropping back into the sealed position.
- Molded in upper handles for ease of plug pulling.
- PP-8B is solid poly with large top opening to allow for concrete filling.

ITEM/MODEL #	ITEM DESCRIPTION
PP-8F	8" Flex Pit Plug
PP-8BF	6-8" Burpable Flex Pit Plug
PP-8B	6-8" Solid Poly Pit Plug
PP-9/12F	9" - 12" Flex Pit Plug
PP-9/12BF	9" - 12" Flex Burpable Pit Plug



SORTING PANELS



- Very durable polyethylene sort panels
- Light weight
- Easy on your knees
- Disease free
- 1.5" Thick protects from falling through slats
- Six widths to choose from

More comfortable height of 32" then inferior panels on the market.

MODEL #	DESCRIPTION	SHIPPING WEIGHT
SP3032	30" x 32" Sort Panel	10 lbs.
SP3632	36" x 32" Sort Panel	12 lbs.
SP4832	48" x 32" Sort Panel	15 lbs.

FLO-RITE

THE NAME FLO-RITE SAYS IT ALL

- Limits bridging
- Low maintenance
- For new or existing bins
- Reduces separation
- First in-out feed
- Easy installation
- Ensures feeding consistency



WITH

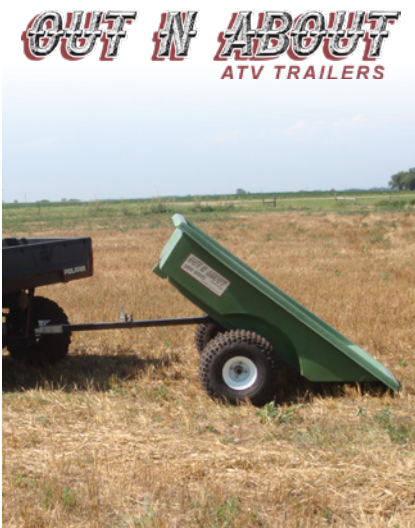
WITHOUT

Decreases separation of particles by insuring uniform flow and feed consistency Promotes first-feed in, first-feed out. Decreases separation of particles by insuring uniform and feed consistency. Reduces feed buildup on the inside walls of the bin. Reduces coning, bridging, and rat-holing of feed in bins.

Rotationally molded polyethylene agitator cone mounted on a steel spider Mounts into the bin collar with the bits that also hold the auger boot in place.



OUT-N-ABOUT TRAILER



WHERE WILL YOU USE YOURS?

- Durable Polyethylene body, won't rust
 - Powder coated under-carriage
 - Tilt and swivel dumping system
 - Torflex independent suspension system (only on 2000 Series trailer)
 - Easy lube, high speed hub & bearing system
 - Standard 2" ball coupler / four bolt hub
- Excellent ground clearance
 - Ideal for Farm, Home, Hunting or Landscaping
 - 16" flotation tires standard on 1000 and 1500 series
 - 18" flotation tires standard on 2000 series
 - Standard Colors - Clay, Olive, Brick or Black
 - 3 year limited warranty

ITEM#	MODEL	ITEM DESCRIPTION
PW1000	1000 SERIES Lawn-N-Gardener	36" x 54"
PW1500	1500 SERIES Sportsmen	48" x 65"
PW2000	2000 SERIES Field-N-Rancher	60" x 80"



MINERAL TUBS



BUILT TOUGH TO STAND UP TO AG ENVIRONMENTS

Available in various colors and private labeling

- Made of durable polyethylene
- Will not rust or corrode
- Commercial weight



ITEM/MODEL #	ITEM DESCRIPTION
FT4816	55 OD - 48" WIDE - 18" DEEP



HOME & GARDEN



OUR MULTI-PURPOSE ALL-TERRAIN "BACK SAVER"

Made of durable easy to clean poly our Handi-Dandy is a made to 'Go Anywhere All Terrain Cart' featuring inflatable tires with 'easy grip' treads and a quick release handle for compact easy storage.

GARDEN SEAT



Our colorful, sturdy Park Style bench is a welcome addition to any area, indoors or out, variety of colors to choose from.

EZ CRATER Premium Poly-Plas Transportation Coops

Our tough poly coop is ideal for transporting birds with maximum ease and efficiency. These light weight durable units feature a hinged door for easy access.

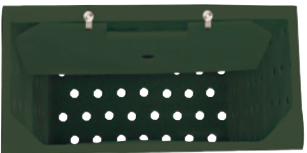
The non-stick surface can be easily spray cleaned for a safe germ free environment.

ITEM/MODEL #	ITEM DESCRIPTION
EZ1624	16" x 24" Pheasant Hauler

NEW AND IMPROVED STAINLESS STEEL HINGE



Front



14 1/2" x 6 1/4" Hinged Opening



Back

WHEN YOU WANT THE BEST IN LONG TERM AND OPERATION COST ADVANTAGES IN YOUR BARN, TURN TO PWA TECHNOLOGIES.

RECOMMENDED VENTILATION RATES

ANIMAL	WEIGHT (LBS.)	UNIT	COLD RATE	WEATHER MILD RATE CFM/UNIT	HOT RATE
SWINE					
Sow & Litter	400	HD	20	80	500
Prenursery Pig	12-30	HD	2	10	25
Nursery Pig	30-75	HD	3	15	35
Growing Pig	75-150	HD	7	24	75
Finishing Pig	150-220	HD	10	35	120
Gestating Pig	325	HD	12	40	150
BOAR/BREEDING					
Sow	400	HD	14	50	300
BEEF					
0-2 MO	HD		15	50	100
2-12 MO	HD		20	60	130
12-24 MO	HD		30	80	180
Mature Cow	1,000		36	120	335
VEAL CALF					
	100 LB		10	20	50
DAIRY					
0-2 MO	HD		15	50	100
2-12 MO	HD		20	60	130
12-24 MO	HD		30	80	180
Mature Cow	1,000 LB		36	120	335
HORSE					
Controlled Environment Barn	1,000 LB		25	100	335
POULTRY					
Broiler 0-7 Days	HD		0.04	0.5	1.0
Broiler Over 7 Days	LB		0.1	0.5	1.0
Layers	LB		0.1	0.5	1-1.5
TURKEYS					
Poults	HD		0.2	0.7	1.4
Growers	LB		0.08	0.35	0.8
Breeders 20-30	LB		0.05	0.15	0.5
RABBITS					
	LB		0.1	0.5	1.0
SHEEP					
Controlled Environment Barn	1,000	LB	25	100	335

Source: University of Ohio CFM Fact Sheet

PWA

TECHNOLOGIES

Phone: 605.925.4868 | Fax: 605.925.4307
www.pwaire.com | www.Prairie-Pride.com
 42906 Colony Rd. | Olivet, SD 57052-6601

